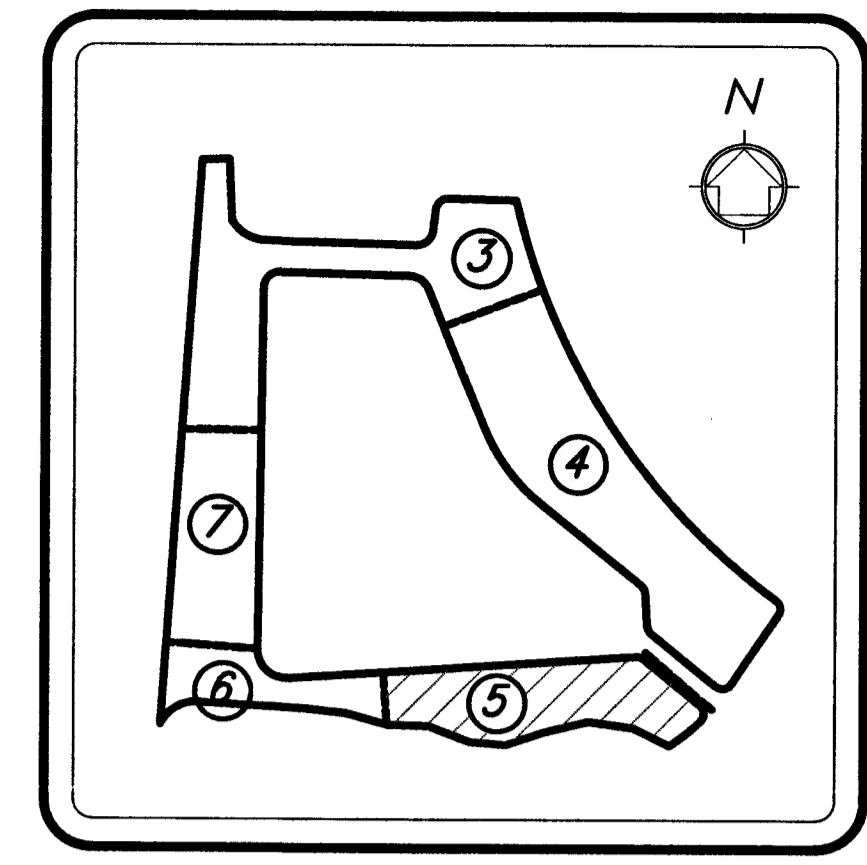
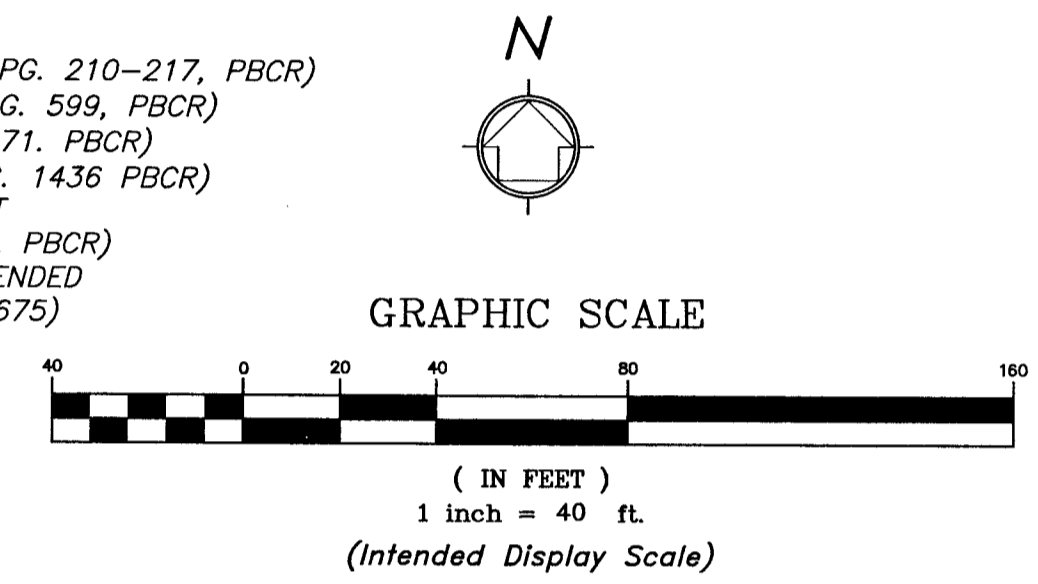
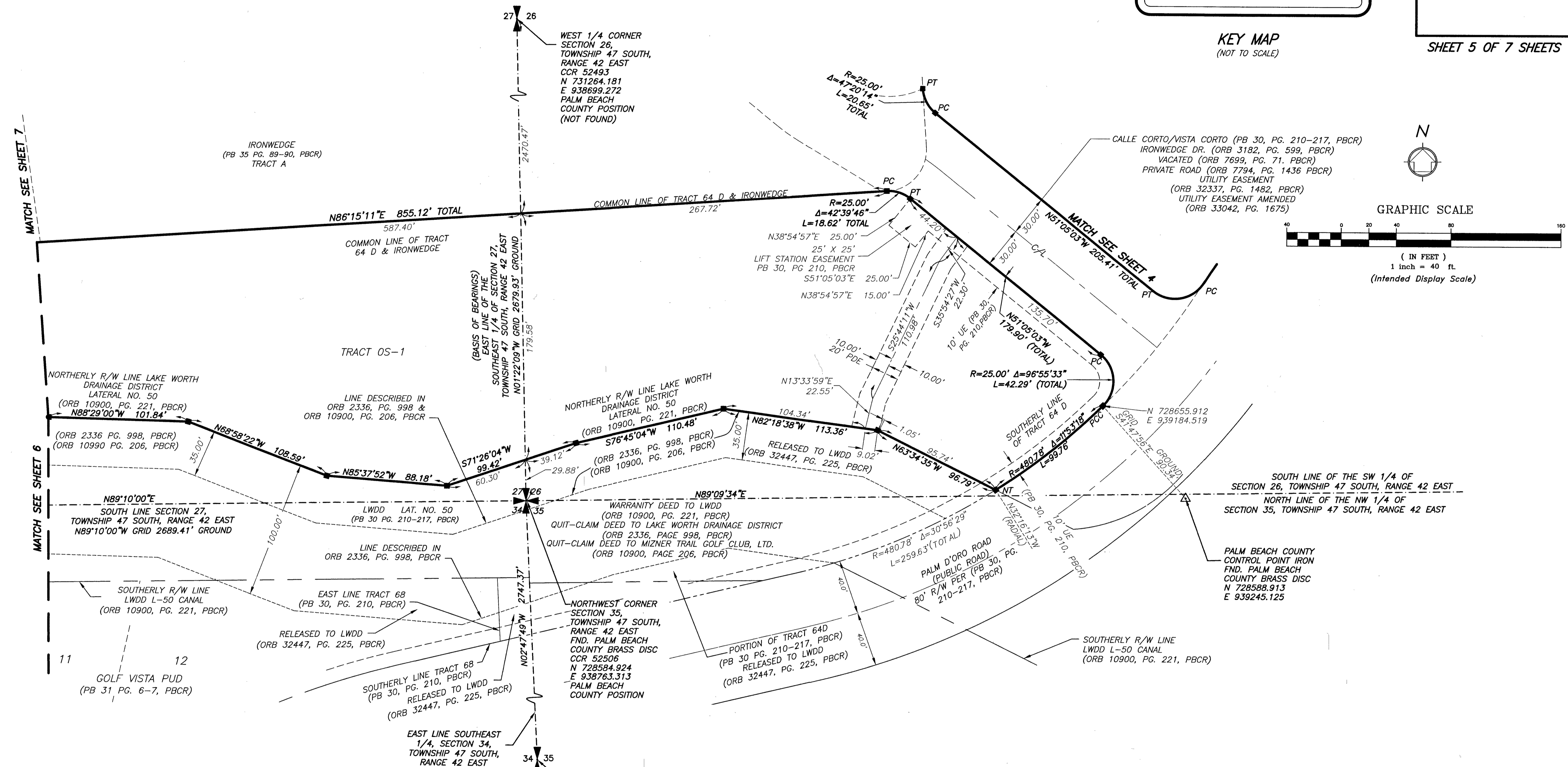


# BOCA DEL MAR PUD - COPPER COVE AT MIZNER VILLAGE

BEING A REPLAT OF A PORTION OF TRACT 64 D AND 69 A, BOCA DEL MAR NO. 7 PUD, PLAT BOOK 30, PAGES 210 THROUGH 217 INCLUSIVE OF THE PUBLIC RECORDS, PALM BEACH COUNTY, FLORIDA. LYING AND SITUATE IN SECTION 26 & 27, TOWNSHIP 47 SOUTH, RANGE 42 EAST, PALM BEACH COUNTY, FLORIDA.



5  
SHEET 5 OF 7 SHEETS



- LEGEND**
- BE = Buffer
  - C/L = Center Line
  - CCR = Certified Corner Record
  - CONC. = Concrete
  - CB = Cord Bearing
  - CD = Cord Distance
  - Δ = Delta (Central Angle)
  - DE = Drainage Easement
  - FPL = Florida Power & Light
  - FND. = Found
  - LME = Lake Maintenance Easement
  - LMAE = Lake Maintenance Access Easement
  - LWDD = Lake Worth Drainage District
  - L = Length of Arc
  - LB = Licensed Business
  - NAD = North American Datum
  - NO. = Number
  - NT = Non Tangent
  - (NR) = Non Radial
  - ORB = Official Records Book
  - ⊙ = Permanent Control Point (PCP)
  - PBCR = Palm Beach County Records
  - PG. = Page
  - PB = Plat Book
  - PDE = Public Drainage Easement
  - PRM = Permanent Reference Monument
  - PUD = Planned Unit Development
  - PT = Point of Tangency
  - PC = Point of Curvature
  - PLS = Professional Land Surveyor
  - PRC = Point of Reverse Curvature
  - R = Radius
  - R/W = Right-of-Way
  - RPB = Road Plat Book
  - (TYP.) = Typical
  - UE = Utility Easement
  - = Set 4"x4" Concrete (PRM) W/Aluminum Disc Stamped "LB 7055 PRM" Unless Otherwise Noted
  - = Set Nail & Brass Disc Stamped "LB 7055 PRM" Unless Otherwise Noted

**NOTE:**  
 COORDINATES SHOWN ARE GRID COORDINATES DATUM - NAD 83 (1990 ADJUSTMENT) STATE PLANE FLORIDA EAST ZONE TRANSVERSE MERCATOR PROJECTION LINEAR UNIT = U.S. SURVEY FEET ALL DISTANCES ARE GROUND SCALE FACTOR = 1.000032176 PLAT BEARING = GRID BEARING GROUND DISTANCE X SCALE FACTOR = GRID DISTANCE



2035 Vista Parkway, West Palm Beach, FL 33411  
 Phone No. 866.909.2220 www.wginc.com  
 Cert No. 6091 - LB No. 7055

THIS INSTRUMENT WAS PREPARED BY KELSEY M. SMITH, P.S.M., PROFESSIONAL SURVEYOR AND MAPPER, LICENSE NO. 7096 FOR THE FIRM: WGI, INC.